

On-Screen Display (OSD) Menu

Configure OSD menu options using the integrated control stick on the camera cable (see image to the right).



To use the OSD menu:

- **OPTIONAL:** Connect a test monitor to the camera's analog (yellow) BNC connector.
- Push the middle of the joystick to open the OSD menu.
- Move the joystick ↑ / ↓ to select a setting, then ← / → to change the setting value.
- Push the middle of the joystick to confirm selection.
- Arrows beside settings indicate a submenu (←/→). Select the setting and push the joystick to enter.
- Select **RETURN** and push the joystick to return to the previous menu, or **EXIT** from the main menu to exit.

See the full OSD menu tree below. For detailed explanation of camera settings, see the OSD instruction manual on www.flirsecurity.com/pro.

Language		
Video Format		
Backlight ←	OFF	
	WDR ←	
	BLC ←	
	HLC ←	
DNR		
Advanced ←	Lens ←	ELC ←
		ALC ←
	Exposure ←	Brightness
		Shutter
		Sens-Up
		AGC
	White Balance ←	Auto
		ATW
		Preset
		Manual ←
	Day&Night ←	Mode
		Delay
		D → N Level
		N → D Level
		Smart IR
		Smart IR Level
	Image ←	Sharpness
		Color Gain
		Freeze
		Flip
		D-Zoom
		Defog
	Special ←	Black Level ←
		Privacy ←
		DP Comp ←
	Reset	
Version		
Exit		

Package Contents

- 1x 1.3MP Fixed WDR Bullet Camera
- 3x Mounting Screws
- 3x Drywall Anchors
- 1x Allen Key
- 1x Power Pigtail Adapter
- 1x Mounting Template

NOTE: 12V DC adapter not included.

Safety Precautions

- Use an appropriate low voltage power cable to prevent fire or electrical shock.
- Make sure to install the camera in an area that can support the camera weight.
- There are no user serviceable parts inside the camera. Please do not disassemble the camera.
- Do not clean the lens cover with an abrasive cleaning material. Please use a soft cloth to clean the lens cover.

1.3MP Fixed WDR Bullet Camera

QUICK START GUIDE
English Version 2.0

**MODEL: C233BC/
C233BCP**



FLIR MPX™

IT'S ALL ON THE WEB!

VISIT
www.flirsecurity.com/pro

FLIR Systems, Inc., Copyright © 2015

As our products are subject to continuous improvement, FLIR Systems Inc. reserves the right to modify product design, specifications and prices, without notice and without incurring any obligation. E60E

FLIR MPX™

www.flirsecurity.com/pro

Installing the Camera

ATTENTION:

Test the camera prior to selecting a permanent mounting location by temporarily connecting the camera(s) and cables to the DVR.

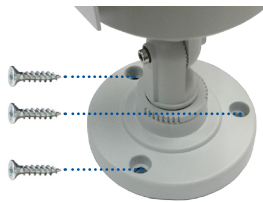
To install the camera:

1. Use the included mounting template to mark and drill holes for the included mounting screws.

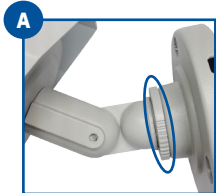
NOTE: Insert the included drywall anchors if installing into drywall.

2. Connect the video and power cable as detailed in the section 'Setting up the Camera'.

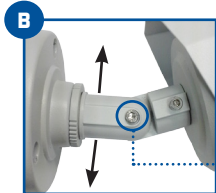
3. Attach the camera base to the mounting surface using the included screws.



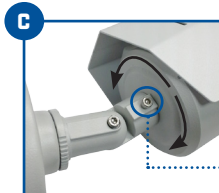
4. Set the position and angle of the camera using the provided Allen key.



A) Turn the adjustment ring to tighten / loosen the stand connection. Adjust the camera's horizontal position.



B) Loosen lower screw with the Allen key to adjust the camera's vertical position.



C) Loosen upper screw with the Allen key to rotate the camera housing.

5. Remove the protective film from the camera lens.

Setting up the Camera

1. Connect one of the two BNC connectors on the camera to the video cable. See "Camera Wiring" for details.
2. **DC Power—Power Pigtail:** Connect the included power pigtail to the camera. Connect the terminating wires of the cable directly to the DC power source.

OR

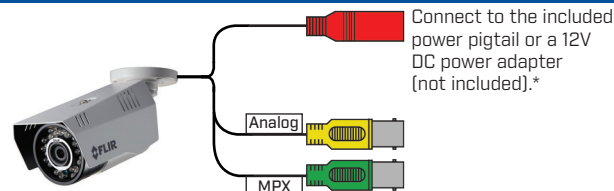
DC Power—Power Adapter: Connect a 12V DC power adapter (not included) to the camera and a local power outlet.

NOTE: For pigtail connection with 12V DC, make sure to check polarity specifications on the power adapter.

WARNING:

A REGULATED 12V DC power supply is REQUIRED for use with this camera. Use of a non-regulated, non-conforming power supply can damage this product and voids the warranty.

Camera Wiring



Connect to the included power pigtail or a 12V DC power adapter (not included).*

MPX
Connect to an MPX DVR for 720p viewing and recording.

Analog
Connect to an analog DVR for 960H viewing and recording.

* Camera focus may be affected if the power connection is too long. It is recommended not to extend the power connection past 200ft (61m).

Extension Cable Options

The entire length of the cable run must be made using a single extension cable between the camera and the DVR.

Specification	Maximum Length
RG59 20AWG Conductor 95% Braid CSA/UL or C(UL) Approved	Up to 1500ft (455m) [†]
RG6 20AWG Conductor 95% Braid CSA/UL or C(UL) Approved	Up to 2300ft (700m) [†]
Analog CCTV Balun	Up to 300ft (91m)

[†] Long cable runs over 1000ft (300m) may be affected by electro-mechanical interference (EMI), which can increase the amount of noise in the picture in some installations.

Camera Specifications

Image Sensor	1/3" 1.3MP CMOS
Video Format	NTSC (C233BC)/PAL (C233BCP)
Effective Pixels	H: 1305 V: 1049
Resolution	Digital: 720p Analog: 960H
Scan System	Progressive
Sync System	Internal
S / N Ratio	≥ 50dB (AGC Off)
Iris	AES
AES Shutter Speed	1/60 (1/50) ~ 1/60,000 sec.
Min. Illumination	0.1 LUX (IR Off) 0 LUX (IR LEDs On)
Video Output	Digital: 720p MPX HD-CVI Analog: Composite 1.0Vpp @ 75ohm
Lens Focal Length / Type	3.6mm F2.0 / Fixed
FOV (Horizontal)	Digital: 78° Analog: 78°
Termination	BNC Type
IR Range / Qty.	70ft / 21m; 24 IR LED's
Power Requirement	12V DC ± 10%
Power Consumption	380mA MAX with IR LED
Operating Temp. Range	-22° ~ 140°F / -30° ~ 60°C
Environmental Rating	IP66
Dimensions (W x H x D)	2.8" x 2.8" x 8.0" 72mm x 72mm x 204mm
Weight (including stand)	0.9lbs / 0.4kg

Camera Dimensions

