

## On-Screen Display (OSD) Menu

Configure OSD menu options using the integrated OSD joystick on the camera cable (see image to the right).

### To use the OSD menu:

- **OPTIONAL:** Connect a test monitor to the camera's analog (yellow) BNC connector.
- Push the middle of the joystick to open the OSD menu.
- Move the joystick  $\uparrow$  /  $\downarrow$  to select a setting, then  $\leftarrow$  /  $\rightarrow$  to change the setting value.
- Push the middle of the joystick to confirm selection.
- Arrows beside settings indicate a submenu ( $\leftarrow$  /  $\rightarrow$ ). Select the setting and push the joystick to enter.
- Select **RETURN** and push the joystick to return to the previous menu, or **EXIT** from the main menu to exit.



See the full OSD menu tree below. For detailed of camera settings, see the OSD instructional manual under the product's **Downloads** tab at [www.flir.com/security/mpx](http://www.flir.com/security/mpx).

HD-Analog		
Language		
Video Format		
Backlight $\leftarrow$	OFF	
	WDR $\leftarrow$ (MPX only)	
	BLC $\leftarrow$	
	HLC $\leftarrow$	
DNR		
Advanced $\leftarrow$	Lens $\leftarrow$	ELC $\leftarrow$
		ALC $\leftarrow$
	Exposure $\leftarrow$	Brightness
		Shutter
		Sens-Up
		AGC
	White Balance $\leftarrow$	Auto
		ATW
		Preset
		Manual $\leftarrow$
	Day&Night $\leftarrow$	Mode
		Delay
		D $\rightarrow$ N Level
		N $\rightarrow$ D Level
		Smart IR
		Smart IR Level
	Image $\leftarrow$	Sharpness
		Color Gain
		Freeze
		Flip
		Defog
	Special $\leftarrow$	Output mode
		Black Level $\leftarrow$
		Privacy $\leftarrow$
	Lens Adj (Service only)	
	Reset	
Version		
Exit		

## Package Contents

- 1x 2.1MP Fixed Bullet Camera
- 3x Mounting Screws
- 3x Drywall Anchors
- 1x Allen Key
- 1x Power Pigtail Adapter
- 1x Mounting Template

**NOTE:** Power adapter not included.

## Safety Precautions

- Use an appropriate low-voltage power cable to prevent fire or electrical shock.
- Make sure to install the camera in an area that can support the camera weight.
- There are no user serviceable parts inside the camera. Please do not disassemble the camera.
- Do not clean the lens cover with an abrasive cleaning material. Please use a soft cloth to clean the lens cover.
- Camera is rated for outdoor use (IP66), but is not intended for submersion in water.
- Do not point the cameras directly towards the sun or a source of intense light.

## WDR Function Notice

WDR is not supported in analog output mode.

## FCC Notice

This equipment has been tested and found to comply with the limits for a Class A digital device, pursuant to Part 15 of the FCC Rules. These limits are designed to provide reasonable protection against harmful interference when the equipment is operated in a commercial environment. This equipment generates, uses, and can radiate radio frequency energy and, if not installed and used in accordance with the instruction manual, may cause harmful interference to radio communications. Operation of this equipment in a residential area is likely to cause harmful interference in which case the user will be required to correct the interference at his own expense.



FLIR Systems, Inc., Copyright © 2016

As our products are subject to continuous improvement, FLIR Systems Inc. reserves the right to modify product design, specifications and prices, without notice and without incurring any obligation. E60E



## 2.1MP Fixed Bullet WDR Camera

### QUICK START GUIDE

English Version 1.0

### MODEL:

C243BW2 SERIES

**MPX**<sup>™</sup>  
MULTI-FORMAT

[flir.com/security/mpx](http://flir.com/security/mpx)

## Installing the Camera

### ATTENTION:

Test the camera prior to selecting a permanent mounting location by temporarily connecting the camera(s) and cables to the DVR.

### To install the camera:

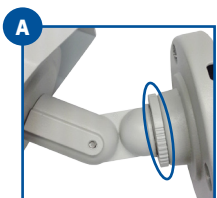
1. Use the included mounting template to mark and drill holes for the included mounting screws.

**NOTE:** Insert the included drywall anchors if installing into drywall.

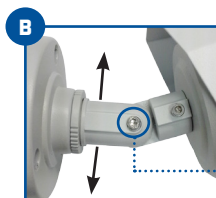
2. Connect the video and power cable as detailed in the section 'Setting up the Camera'.

3. Attach the camera base to the mounting surface using the included screws (3×).

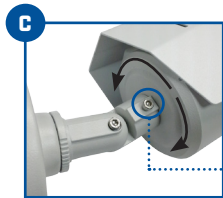
4. Set the position and angle of the camera using the included Allen key.



A) Turn the adjustment ring to tighten / loosen the stand connection. Adjust the camera's horizontal position.



B) Loosen lower screw with the Allen key to adjust the camera's vertical position.



C) Loosen upper screw with the Allen key to rotate the camera housing.

5. Remove the protective film from the camera lens.

## Setting up the Camera

1. Connect one of the two BNC connectors on the camera to the video cable. See "Camera Wiring" for details.

2. **DC Power—Power Adapter:** Connect a 12V DC power adapter (not included) to the camera and a local power outlet.

**[OR]**

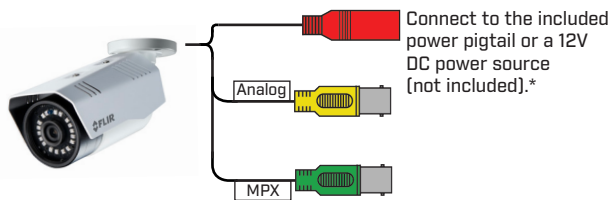
**DC Power—Power Pigtail Adapter:** Connect the included power pigtail adapter to the camera. Connect the terminating wires of the cable directly to the DC power source.

**NOTE:** For pigtail connection with 12V DC, make sure to check polarity specifications on the power source.

### WARNING:

A REGULATED 12V DC power supply is REQUIRED for use with this camera. Use of a non-regulated, non-conforming power supply can damage this product and voids the warranty.

## Camera Wiring



**MPX**  
Connect to an analog HD DVR supporting 1080p or higher resolution.\*\*

**Analog**  
Connect to any DVR supporting analog input.

\* Camera focus may be affected if the power connection is too long. It is recommended not to extend the power connection past 200ft (61m).

\*\* For information on compatibility with various analog HD formats, visit [www.flir.com/security/MPXcomp](http://www.flir.com/security/MPXcomp).

## Extension Cable Options

The entire length of the cable run must be made using a single extension cable between the camera and the DVR.

Specification	Maximum Length
RG59 20AWG Conductor 95% Braid CSA/UL or C(UL) Approved	Up to 1310ft (400m) <sup>†</sup>
RG6 20AWG Conductor 95% Braid CSA/UL or C(UL) Approved	Up to 1640ft (500m) <sup>†</sup>
Analog CCTV Balun	Up to 300ft (91m)

<sup>†</sup> Long cable runs over 1000ft (300m) may be affected by electro-mechanical interference (EMI), which can increase the amount of noise in the picture in some installations.

## Changing Video Format

Using the integrated OSD joystick on the camera cable, you can change the camera's video format.

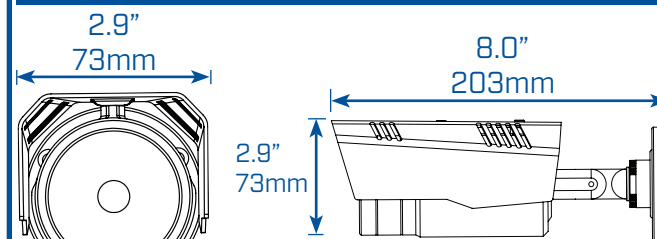
### To change the camera's video format:

1. Press and hold the joystick for 2 seconds to change the camera's current video format.
2. Repeat until the correct video format appears on screen.

**NOTE:** During the switching process, you may notice minor distortion in the camera image for a brief period. This is normal.

For details on supported analog HD camera formats, visit [www.flir.com/security/MPXcomp](http://www.flir.com/security/MPXcomp).

## Camera Dimensions



## Resources

### Need Help?

Visit us online for up-to-date software and complete instruction manuals



- 1 Go to [flir.com/security/mpx](http://flir.com/security/mpx)
- 2 Click **Q**, and enter the model number of your product
- 3 Click on your product in the search results
- 4 Click on the **Downloads** tab