

Copyright

© 2014, FLIR Systems, Inc.

All rights reserved worldwide. Names and marks appearing herein are either registered trademarks or trademarks of FLIR Systems and/or its subsidiaries. All other trademarks, trade names or company names referenced herein are used for identification only and are the property of their respective owners.

Document identity

Publ. No.: LX400029
Release: 1.0
Commit: 16324
Head: 16324
Language: en-US
Modified: 2014-08-14
Formatted: 2014-08-14

Website

www.flirsecurity.com/pro

Technical Support

1-866-816-5919

Customer Service

1-866-344-4674

Legal disclaimer

Specifications subject to change without further notice. Camera models and accessories subject to regional market considerations. License procedures may apply. Products described herein may be subject to US Export Regulations. Please refer to exportquestions@flir.com with any questions.


1 Q: How do I get the best possible image during live display?

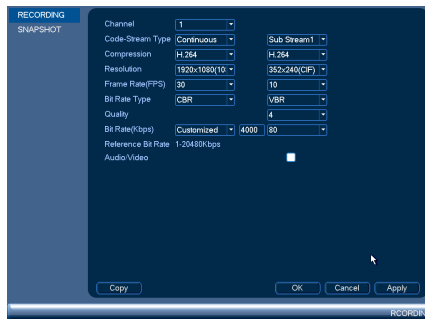
A: The system is designed to record all channels at high definition resolutions up to 5MP in real time. Up to four channels at a time may be viewed using the system's high definition Main Stream. If more than four channels need to be viewed, additional channels will be displayed using the lower resolution Sub Stream. Although the live display picture will not be as sharp on these channels, all channels are being recorded in high definition.

There are a few different methods to get the best possible live display image:

- View four channels at a time in quad mode. This ensures all cameras on the screen are shown in high definition.
- In 9-channel or 16-channel split-screen modes, the first four channel positions will be displayed in high definition. You can click and drag cameras to one of the first four channel positions to show them in high definition.
- Connect to the system using the FLIR Cloud™ CMS on a PC or Mac. You can set the CMS to stream all cameras using the Main Stream. Please note that this is only recommended if your PC or Mac is in the same network as the NVR, as streaming high definition video over the Internet requires a very high upload speed.
- Set the system to the highest possible quality settings for the Sub Stream using the instructions below. The Sub Stream is used primarily for connecting to the system over the Internet, so increasing the Sub Stream quality may affect the performance of remote connections due to higher bandwidth usage.

To increase the Sub Stream video quality:

1. From the Main Menu, click  and select **Recording>Recording**.
2. Under **Channel**, select **1**.
3. Configure the right column to set the sub stream settings. The following settings are recommended for the best possible live display quality.



- **Resolution:** 704x480 (D1).
- **Frame Rate(FPS):** 30.
- **Bit Rate(Kbps):** 256 or higher.

Note

These settings may differ depending on the IP camera model.

4. Click the **Copy** button to copy recording settings to other channels. Click **All** and then click **OK**.
5. Click **OK** to save settings.