

Package Contents

- 8MP Fixed Network Eyeball Dome Camera with Audio
- Mounting Kit*
- RJ45 Cap*
- Allen Key*

* Per camera in multi-camera packs.

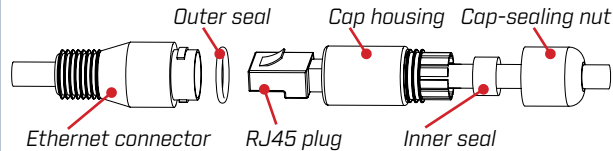
Compatible Accessories

For a full list of compatible accessories, visit flir.com/security/cameramounts.

Safety Precautions

- Use an appropriate low-voltage power cable to prevent fire or electrical shock.
- Make sure to install the camera in an area that can support the camera weight.
- There are no user-serviceable parts inside the camera. Please do not disassemble the camera.
- Do not clean the lens cover with abrasive cleaning materials. Please use a soft cloth to clean the lens cover.
- Camera is rated for outdoor use (IP67), but is not intended for submersion in water.
- Extend the Ethernet-cable run for your camera up to 300ft. You can use an RJ45 coupler or network switch to connect male ends of Ethernet cable together. A maximum of 3 connections is recommended.

Using the RJ45 Cap (Optional)



1. Fit the outer seal over your camera's Ethernet connector and insert the inner seal into the cap housing.
2. Run the stripped end of an Ethernet cable through the parts of the RJ45 cap, as shown above.
3. Terminate the Ethernet cable with an RJ45 plug, and plug the cable into your camera's Ethernet connector.
4. Screw the cap housing onto the Ethernet connector.
5. Screw the cap-sealing nut tightly into the cap housing.

ATTENTION:

The supplied RJ45 cap is weather-resistant. Seal the cap with silicone if it will be exposed to precipitation regularly.

FCC Notice

This equipment has been tested and found to comply with the limits for a Class A digital device, pursuant to Part 15 of the FCC Rules. These limits are designed to provide reasonable protection against harmful interference when the equipment is operated in a commercial environment. This equipment generates, uses, and can radiate radio frequency energy and, if not installed and used in accordance with the instruction manual, may cause harmful interference to radio communications. Operation of this equipment in a residential area is likely to cause harmful interference in which case the user will be required to correct the interference at his own expense.

IT'S ALL ON THE WEB!

VISIT
flir.com/security/pro

FLIR Systems, Inc., Copyright © 2018

As our products are subject to continuous improvement, FLIR Systems Inc. reserves the right to modify product design, specifications and prices, without notice and without incurring any obligation. E60E



N253EA8_QSG_EN_R1

8MP Fixed Network Eyeball Dome Camera with Audio

QUICK START GUIDE
English Version 1.0

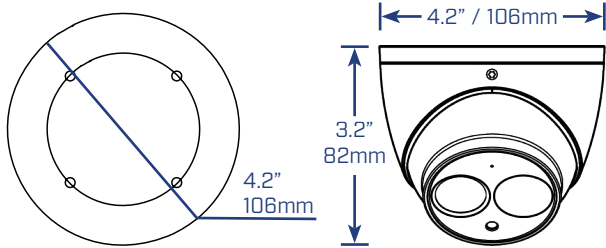
MODEL:
N253EA8 SERIES



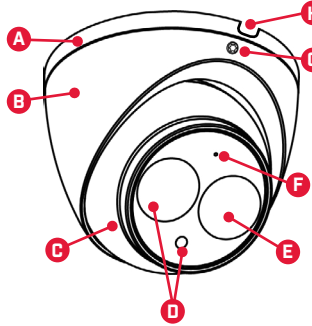
FLIR **IP**TM

flir.com/security/pro

Weight & Dimensions



Camera Overview



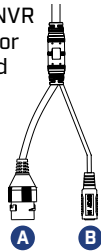
- A. Camera Base**
- B. Dome Cover**
- C. Ball Camera**
- D. Light Sensor and IR LEDs**
- E. Camera Lens**
- F. Built-in Microphone:** See 'Audio Settings' for details.
- G. Adjustment Screw**
- H. Cable Notch**

Connecting the Camera

A. Ethernet Connector: Connect the camera to an NVR or a router or switch on your network using CAT5e or better Ethernet cable (not included). PoE supported (802.3af).

NOTE: For instructions on weatherproofing the Ethernet connection, see "Using the RJ45 Cap (Optional)" on reverse.

B. Power Input: If not using PoE, connect the camera to a 12V DC power source (420mA or higher required).

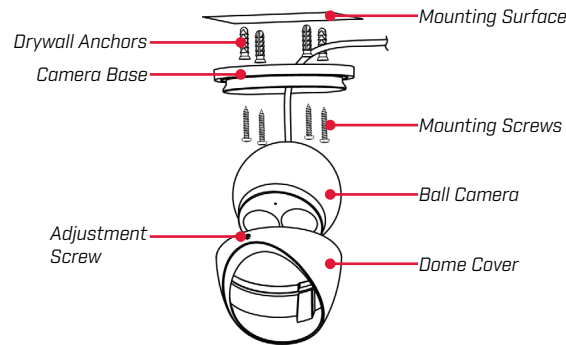
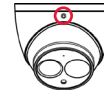


Installing the Camera

ATTENTION:

Test your camera prior to selecting a permanent mounting location by temporarily connecting the camera and cable to your NVR.

- Use the included Allen key to loosen the adjustment screw on the dome cover. Do not loosen all the way.
- Separate the camera base, ball camera, and dome cover.
- Use the included mounting template to mark holes for the mounting screws and camera cable.
- Drill holes for the mounting screws and camera cable.
- Feed the camera cables through the camera base.
- Connect the cables as shown in the section 'Connecting the Camera'.
- Mount the camera base to the mounting surface using the included screws and optional drywall anchors.
- Place the dome cover over the ball camera.
- Attach the dome cover to the camera base.
- Use the included Allen key to tighten the adjustment screw halfway onto the camera base. Do not tighten all the way.
- Move the ball camera to the desired position. Tighten the adjustment screw all the way.



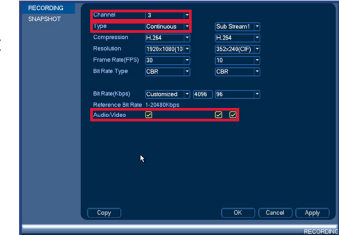
Audio Settings

ATTENTION:

Audio is disabled by default. Audio recording and / or use of listen-in audio without consent is illegal in certain jurisdictions. FLIR Systems, Inc. assumes no liability for use of its products that does not conform with local laws.

To enable audio recording through a FLIR NVR:

- From the **Main Menu**, click and select **Recording > Recording**.



- Select the camera under **Channel**.
- Select **Continuous** or **Motion** under **Type**.
- Check the left **Audio/Video** checkbox to enable audio recording. Check the middle checkbox to enable audio streaming to remote devices (such as a smartphone). Check the right checkbox to enable video streaming to remote devices.
- Click **OK** to save changes.

To enable listen-in audio through a FLIR NVR:

ATTENTION:

Enabling listen-in audio does not enable audio recording. To record audio, follow the steps above to enable audio recording through a FLIR NVR.

NOTE: Listen-in audio requires a monitor with speakers or speakers connected to the NVR.

- In Live View, double-click the camera channel to open in full-screen.
- Hover near the top of the channel where the camera is connected and click to enable / disable listen-in audio.

NOTE: These instructions are based on the current FLIR 4K NVR interface. For more information, see your NVR's instruction manual on flir.com/security/pro.