

Package Contents

- 5MP Fisheye Network Dome Camera
- 3× Mounting Screws & Drywall Anchors
- Allen Key
- Mounting Template
- RJ45 Cap

Compatible Accessories

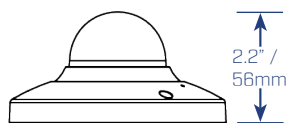
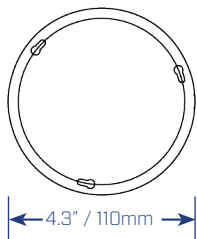
This security camera has several mounting options:

Accessories	Model Numbers
Junction Boxes	S1JF4G or S4JF2G
Wall Mount	S1WA2G
Pole Mounts	S4PA2GS with S1WA2G, or S4PA2GS with S1JF4G, or S4PA2GS with S4JF2G
Corner Mounts	S1RA2G with S1WA2G, or S1RA2G with S1JF4G, or S1RA2G with S4JF2G

Safety Precautions

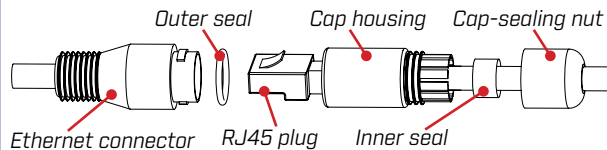
- Use an appropriate low-voltage power cable to prevent fire or electrical shock.
- Make sure to install the camera in an area that can support the camera weight.
- There are no user-serviceable parts inside the camera. Please do not disassemble the camera.
- Do not clean the lens cover with abrasive cleaning materials. Please use a soft cloth to clean the lens cover.
- Camera is rated for outdoor use (IP67), but is not intended for submersion in water.
- Extend the Ethernet-cable run for your camera up to 300ft. You can use an RJ45 coupler or network switch to connect male ends of Ethernet cable together. A maximum of 3 connections is recommended.

Weight & Dimensions



Weight
0.9lbs / 0.4kg

Using the RJ45 Cap (Optional)



1. Fit the outer seal over your camera's Ethernet connector and insert the inner seal into the cap housing.
2. Run the stripped end of an Ethernet cable through the parts of the RJ45 cap, as shown above.
3. Terminate the Ethernet cable with an RJ45 plug, and plug the cable into your camera's Ethernet connector.
4. Screw the cap housing onto the Ethernet connector.
5. Screw the cap-sealing nut tightly into the cap housing.

ATTENTION:

The supplied RJ45 cap is weather-resistant. Seal the cap with silicone if it will be exposed to precipitation regularly.

FCC Notice

This equipment has been tested and found to comply with the limits for a Class A digital device, pursuant to Part 15 of the FCC Rules. These limits are designed to provide reasonable protection against harmful interference when the equipment is operated in a commercial environment. This equipment generates, uses, and can radiate radio frequency energy and, if not installed and used in accordance with the instruction manual, may cause harmful interference to radio communications. Operation of this equipment in a residential area is likely to cause harmful interference in which case the user will be required to correct the interference at his own expense.

IT'S ALL ON THE WEB!

VISIT
flir.com/security/pro

FLIR Systems, Inc., Copyright © 2018

As our products are subject to continuous improvement, FLIR Systems Inc. reserves the right to modify product design, specifications and prices, without notice and without incurring any obligation. E80E



N258F5_QSG_EN_R2

5MP Fisheye Network Dome Camera

QUICK START GUIDE
English Version 2.0

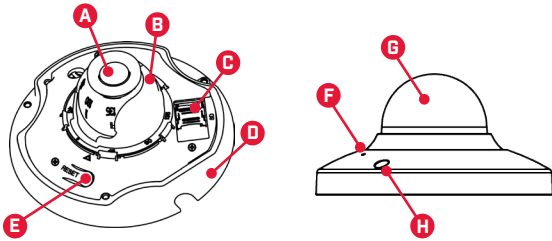
MODEL:
N258F5 SERIES



FLIR IP™

flir.com/security/pro

Camera Overview



- A. Lens Module**
- B. Lens Holder**
- C. microSD Card Slot:** See "Inserting the microSD Card" for details.
- D. Camera Base**

- E. Reset Button:** See "Resetting the Camera" for details.
- F. Built-in Microphone:** See "Audio Settings" for details.
- G. Dome Cover**
- H. Dome Cover Screws (x3)**

Connecting the Camera

A. Ethernet Connector: Connect the camera to an NVR or a router or switch on your network using CAT5e or better Ethernet cable (not included). PoE supported (802.3af).

NOTE: For instructions on weatherproofing the Ethernet connection, see "Using the RJ45 Cap (Optional)" on reverse.

B. Power Input: If not using PoE, connect the camera to a 12V DC power source (240mA or higher required).

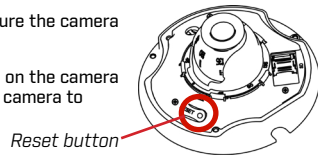


ATTENTION:

The 5MP Fisheye Network Dome Camera is compatible with DNR700, DNR800, DNR900, and newer 4K supporting NVRs. Currently, only one 5MP Fisheye Network Dome Camera can be supported per compatible NVR.

Resetting the Camera

- Remove the dome cover. Make sure the camera is powered on.
- Press and hold the reset button on the camera base for 5 seconds to reset the camera to default settings.



Installing the Camera

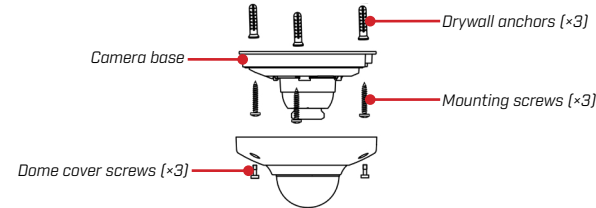
ATTENTION:

- Test the camera prior to selecting a permanent mounting location by temporarily connecting the camera cables to an NVR or PoE network switch.
- It is recommended to install the camera where there is some ambient light (for example, street lighting or starlight, moonlight, etc.) or leave some lighting on in the area where the camera is installed.
- In total darkness (zero Lux), the camera will not produce a night time image and therefore the camera should not be installed in completely dark areas.

- Use the included Allen key to loosen the screws on the dome cover. Remove the dome cover.
- Use the included mounting template to mark holes for the mounting screws and camera cable.

Installing the Camera (cont'd)

- Drill holes for the mounting screws and camera cable.
- NOTE:** Use the included drywall anchors if needed.
- Connect cables as shown in the section "Connecting the Camera".
 - Attach the camera base to the mounting surface using the included mounting screws (3x).
 - Twist the camera base to secure it in place. Ensure the mounting screws slide into the narrow end of the keyholes on the camera base.



ATTENTION:

For most installations, it is **not** recommended to adjust the camera lens position. Adjusting the camera lens position may impact image quality. If necessary, angle the lens slightly downward when installing in the wall mounted position.

- Replace the dome cover. Use the included Allen key to tighten the dome cover screws (3x).
- Remove the vinyl film from the dome cover.

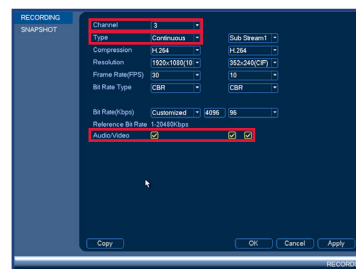
Audio Settings

ATTENTION:

Audio recording and listen-in audio are disabled by default. Audio recording and / or use of listen-in audio without consent is illegal in certain jurisdictions. FLIR Systems, Inc. assumes no liability for use of its products that does not conform with local laws.

To enable audio recording and listen-in audio through a FLIR NVR:

- From the **Main Menu**, click and select **Recording > Recording**.
- Select the camera under **Channel**.
- Select **Continuous** or **Motion** under **Type**.
- Check the left **Audio/Video** checkbox to enable audio recording and listen-in audio. Check the middle checkbox to enable audio streaming to remote devices (such as a smartphone). Check the right checkbox to enable video streaming to remote devices (enabled by default).
- Click **OK** to save changes.

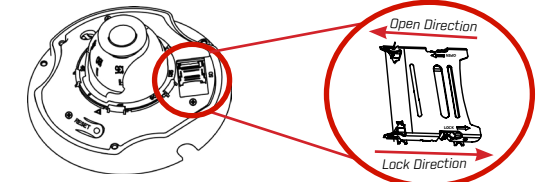


Inserting the microSD Card

For local recording, you can install a microSD card up to 128GB. SanDisk™ or Kingston™ brand microSD cards recommended.

ATTENTION:

The camera requires a minimum of Class 10 microSD card.



- Remove the dome cover. Locate the microSD slot as indicated in the image above.
- Slide the microSD slot metal cover towards the open direction (see image above), then lift the metal cover upward.
- Place the microSD card (not included) into the slot with the metal contacts facing down.
- Close the metal cover and slide it towards the lock direction (see image above).

NOTE: For details on configuring microSD recording, see the FLIR IP Series Instruction Manual on this camera's product page at www.flir.com/security/pro.

Selecting the Display Mode

The default Live View display mode is Full Fisheye. Change the display mode using the Camera Orientation menu.

To change the Live View display mode:

- In Live View, right click and click **Fish Eye**.
- Use the **Camera Orientation** menu to select the method of installation. Select **Ceiling Mount** , **Wall Mount** , or **Table Mount** .
- Select the **Show Mode**.

NOTE: The available show modes will vary depending on the selected **Camera Orientation**.

- Full fish eye image (default Live View display mode)
- 360° panorama with independent image(s)
- Two 180° panorama images
- Full fish eye with independent images
- 180° rectangular, panorama image
- 180° rectangular, panorama image with independent images

ATTENTION:

The NVR always records video in the Full Fisheye display mode. Use the **Camera Orientation** menu to change the display mode for the Live View screen and Playback mode. For more information about dewarping the image and exporting video files, see the FLIR IP Series Instruction Manual on this camera's product page at www.flir.com/security/pro.